

FENDT 200 VARIO SERIES

FENDT



FENDT® 200 VARIO SERIES | 94 TO 124 HP

FENDT 200 VARIO – FOR THE BEST JOB IN THE WORLD.

Fendt® 200 Vario at a glance

Because performance comes in all sizes, we have equipped the new Fendt 200 Vario with everything you need for fantastic results. Compact dimensions and an airy, spacious cab not only make it incredibly comfortable, but also the perfect partner in all conditions. Performance and incredible versatility over three equipment versions give you the power to achieve great things. Your workplace, your rules—with FendtONE you can experience intuitive operation in a completely new way. Above all, you can expect one thing; just the right functions for your needs.

Engine		209 Standard Vario	210 Standard Vario	211 Standard Vario
Maximum power ECE R 120	HP / kW	94 / 69	104 / 77	114 / 84
Maximum power with DP ECE R 120	HP / kW	–	–	124 / 91



INNOVATION AND PERFECT MODULARITY.

The Fendt 200 Vario boasts a total of 31 innovations. 23 of these are packed into the standard configuration, Power. The Profi version offers additional innovations embedded in the terminal. The Profi+ has five further innovations linking the vehicle to the office with a range of options in terms of lane guidance, machine control and agronomy. The detailed table below shows all the added options offered with the new Fendt 200 Vario.



Equipment ranges Power, Profi, Profi+.

The illustrations show the different equipment lines.



Power Setting

- Crossgate lever
- No linear module (rocker pair)



Profi Setting

- 3L joystick
- 2 linear modules (rocker pair) to control hydraulic valves
- 12" terminal
- ISOBUS



Profi+ Setting

- 3L joystick
- 2 linear modules (rocker pair) to control hydraulic valves
- 12" terminal
- Fendt Guide preparation
- ISOBUS

CAB & TECHNOLOGY PACKAGES

Power – innovations	Profi – innovations	Profi+ – innovations
<ul style="list-style-type: none"> Top-end model 211 Vario with up to 124 hp engine output (ECE R120), DynamicPerformance Fendt Connect Telemetry Hydraulic tappets for reduced maintenance Electronically controlled Visctronic fans Diesel Tank 33 gal (125 L) Tractor Management System TMS with auto Limit Load 2.0 with Kickdown mode for acceleration as standard Comfort Cab, opening front windshield Steering column and dashboard adjustable by foot pedal in height and tilt Footwell heating (optional) Built-in cable ducts at rear FendTONE – control panel including multifunction joystick; pushdial and key assignment with flexible color-coding Central 10", configurable dashboard terminal with pushdial navigation and four hotkeys Multifunction 2-way joystick, with proportional hydraulic control; cruise control settings on the dial Hydraulic capacity 27.4 gpm (104 lpm) Power Beyond optional, together with CCLS pump Halogen headlights and LED daytime lights 	<div style="text-align: center;">+</div> <p>Includes all of the Power innovations</p> <ul style="list-style-type: none"> Fendt T1 headland management (together with 12" terminal) 12" terminal on the armrest with touch + pushdial controls 3L joystick to control hydraulic functions including reverse button Rocker controls with color-coding Machine Control module: Control ISOBUS attachments with ISOBUS 	<div style="text-align: center;">+</div> <p>Includes all of the Power & Profi innovations</p> <ul style="list-style-type: none"> Agronomy module: Create and analyze jobs on the machine with Task Doc Documentation and Task Manager control Machine Control module: Control ISOBUS attachments with ISOBUS Fendt Guide preparation

YOUR FAVORITE PLACE WITH A 100° PANORAMIC VIEW.



The built-in roof window provides an outstanding overview with an impressive 100° viewing angle. This gives you an unobstructed view, from the lifted front loader down to the wheel placement.



The comfort seat, with suspension and a mechanical lumbar support, offers excellent seating comfort. The instructor seat is cushioned and can be pivoted upwards to save space, if required.

A workplace that suits you perfectly—ingeniously simple, simply ingenious

We not only promise individuality, we even set new standards. With the new Comfort cabin and the FendtONE workplace, you can expect an all-new overall concept for your driver's workplace. The wide driver's seat, the steering column, which can be easily adjusted by foot pedal, and the digital, adjustable dashboard offer you a perfectly adjustable workstation. There is a generous control console with multifunction joystick for perfect ergonomics. Let the spacious and super-comfortable cab become your new favorite place—compact enough to work even in tight conditions and yet so airy, for the best all-round overview. And, with a 100° viewing angle, you get a clear view at all times, even of the lifted front loader. To the ground and straight ahead, your line of vision is excellent with the compact hood and slender design.

For those who need more—full modularity

Every operation is different. That's why we offer you an outstanding variety of options. Because you need a tool that fits seamlessly into your business. With three lines – Power, Profi and Profi+— you can tailor your tractor perfectly to your requirements. From the high-quality standard version Power to the fully digital Profi+ version with 12" terminal, tracking accuracy to 2 cm, embedded documentation.

The attention to detail makes all the difference

Enjoy the wide steps and easily accessible door handle. A range of smart details brings more joy to your every day. This includes a cooler box on the left, a number of storage compartments, a stretch net and built-in drink holder. With the rear closed, the ingenious integrated cabling means each cable is laid from the outside in. Dust, noise and water stay outside. There is an additional vertical handle on the rear window so you can reach the open window at any time.

Mechanical cab suspension optional

A perfectly fine-tuned cab suspension is key to comfortable and easy driving and working. The mechanical cab suspension effectively minimizes vibrations and shocks. Cone bearings at the front and mechanical spring damper elements make driving extremely comfortable. They prevent vibrations and noise being transferred to the cab.



Numerous storage compartments, from the drink holder to the cooled storage compartment, make work a pleasure even over long hours.



Air conditioning and adjustable windshield

The sophisticated ventilation and air conditioning concept provides excellent air flow via the steering column and the cab roof. There are eight air nozzles to distribute the air just where you want it in the cab. You can also open the front window. For winter service work, choose the optional additional heating system with two extra outlets in the footwell.



Fendt offers a clever solution for cables that run from the rear of the tractor into the cab. Cables can be guided through the lead-through, no matter what kind of cross section they have. The rear window can be closed, so dust, dirt, water and noise stay outside.



A special feature of the Fendt 200 Vario is the vertical handle on the rear window, which lets you open and close the window from the comfort of your seat.



Perfectly adjustable workplace

For the best sitting position, the steering wheel and cockpit must be at the right height and tilt angle. Both are quick and easy to finely adjust by foot pedal. *Benefits: Optimum visibility and no glare in the cockpit; quickly folds away for easy entry and exit.*

A WORKPLACE THAT FEELS LIKE HOME.

Dashboard—control console—12" terminal—freely assignable keypads



Settings and overview in the dashboard

Shown here is the main digital dashboard where you can easily configure the main function groups. Your road driving info is on permanent display on the left and right. On models without the 12" terminal, you will find the settings for the main groups in the middle; power lifts, hydraulics, engine and transmission, onboard computer with consumption rates, ventilation, lighting, front axle suspension, button assignment, as well as service and diagnostics. It's all in your control with the new pushdial on the right of the steering column. This gives you access to the display areas and various menus. There is a separate control dial for the air conditioning and ventilation.



Multifunction joystick—freely assignable buttons

When we developed the new control concept, we focused on intuitive operation as well as ergonomics. We improved the ergonomics of the 2-way multifunction joystick with improved handrest, for example, and four freely assignable keys with added functions, making it easier to operate different attachments without having to reposition yourself. The new joystick has a total of 18 keys, including 2 proportional buttons. 13 of these can be freely assigned.



12" touch terminal—additional functions, display area and touch control

The Fendt 200 Vario, with the Profi or Profi+ configuration, has an adjustable 12" terminal with touch or pushdial control, depending on the configuration. Tractor and implement controls, optional camera function as well as guidance and documentation are completely integrated. Up to 6 freely configurable screens are shown on each menu page of the terminal. All vehicle adjustment menus as well as additional assist systems are shown here. Then we have the ingenious headland management Fendt TI, the ISOBUS control system as well as the full Fendt Guide guidance system from Profi+.

Classic crossgate lever or 3L joystick

The classic crossgate lever controls 2 valves and the 3rd and 4th circuits. The 3L joystick controls 4 valves and has a freely assignable button, which you can allocate to the 3rd circuit, for example, so you can keep your right hand on the joystick at all times.



- 1 Use the central pushdial to decide what to display on the Fendt 200 Vario. This includes four quick access keys for Back, Launchpad, Overview, Individual Operation Manager (IOM) and switching between terminal and dashboard. You can also toggle between the various terminals.
- 2 12" terminal, pivoting, with touch and pushdial controls
- 3 As well as the familiar clover leaf operation, the multifunction joystick includes two controls for proportional valve control as well as four freely assignable white keypads.
- 4 The 3L lever offers sensitive control without having to reach over two control valves. Complex implement functions can be controlled with the optional third and fourth hydraulic circuits. These are activated and controlled by pushbuttons on the crossgate lever.
- 5 Here you will find control buttons for the all-wheel drive and differential locks on the left, with the power lift settings on the right.
- 6 In the middle operating level, from the left, we have the following: hand throttle, speed spread, adjustment rockers 1 and 2 (freely assignable), PTO actuation as well as front power lifts and rear power lifts with depth adjustment.
- 7 Control the front and rear PTO shaft
- 8 Foldable storage with USB ports
- 9 This is where you can easily manage the usual transmission and driving functions with pushbuttons: including two engine speed programs, two cruise control settings and a new dial-controlled active cruise control setting.
- 10 The lower control level includes the colored LED display for each setting. The driver immediately sees whether buttons have been re-allocated by the colour concept. By default, these are the hydraulic valves.
- 11 Hand throttle and pedal range settings

COMPACT, STRONG, SMART AND LOW-IMPACT.

DynamicPerformance (DP), Fendt's added power concept for greater area coverage and higher productivity

The Fendt 211 Vario has a maximum engine power of 114 hp. The innovative power boost concept DP releases up to 10 hp more power when needed. The power is usually distributed to consumers like the PTO shaft, hydraulics, fans and air conditioning. The system detects when certain components need more power and then provides it through smart control. DP works for stationary PTO work—such as with your stump grinder—just as it does on the move. DP also kicks in for ground work and for slow transport journeys according to the power required from active consumer units. The 10 hp extra power is great for farms that want a strong, agile tractor with power reserves.

Emission control with passive DPF, DOC and SCR

The SCR exhaust technology together with the diesel particulate filter (DPF) proves to be particularly fuel-saving because the DPF does not require diesel injection during regeneration. The injected urea solution DEF reduces the nitrogen oxides. Combined with the diesel oxidation catalyst (DOC), emissions are reduced effectively and the tractor complies with the latest emissions standards (Tier 4f).



Low center of gravity for enhanced stability.
The high stability of the Fendt 200 Vario results from the tractor's low center of gravity. Together with the optimum traction and constant power engagement of the Vario transmission, you can work comfortably and without stress, even on slopes.

Enjoy Vario added power

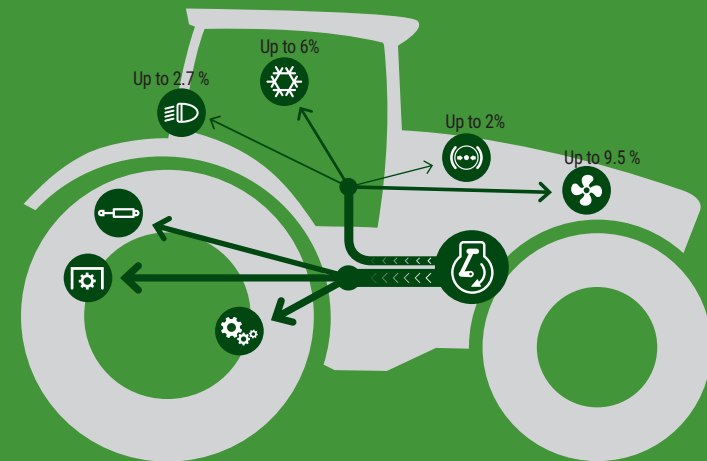
The continuously variable Vario transmission combines maximum driving comfort with unrivalled area coverage. The built-in extra power of the Fendt Vario comes from always working sensitively at the perfect speed and optimum efficiency to achieve maximum area coverage. From 65 ft/hr (20 m/h) to 25 mph (40 kph) and any speed in between. Even on extreme slopes you can brake continuously until you come to a standstill, secure the machine on the slope using the active stop control, and then drive away smoothly. This protects your soil and provides exceptional ease of operation. It taps into power reserves that powershift gears just can't touch.

Well-balanced and efficient with TMS

Frequently changing tasks are all in a day's work for this versatile tractor. With TMS (Tractor Management System), you just have to specify the desired speed. The Fendt 200 Vario has been designed for ideal performance, low fuel consumption and reduced wear on components.



The new digital-control Visctronic fan adapts extremely sensitively to actual cooling requirements. This saves up to 1.4% in fuel and runs more quietly than a conventionally controlled fan. It also reduces repairs and increases service intervals even in dusty conditions.



- Engine power
- Transmission
- Hydraulics
- PTO
- Light
- Air-con
- Compressor
- Fan



Driving pedal or joystick control:
The driving mode can be selected individually. The speed can be controlled with either the pedal or the joystick. Change drive direction either with the joystick or the reverse lever with built-in stop and go function.



The large diesel tank with 33 gal (125 L) of diesel on the A-pillar ensures long range. Then there is the 4.2 gal (16 L) DEF tank at the front on the hood head. Work longer without refuelling.



Reverse fan: for demanding conditions
The optional reversing fan reduces daily maintenance tasks and increases machine uptime.

MAKES YOUR WORK EASIER THAN EVER.



Three front power lift versions to suit every task

The power lift with vibration damping is available as standard, with position control as well as an exclusive version with position and load relief control. With load relief control, you can define the field pressure in the terminal for balanced implement driving. This is a great help with a front mower, because the implement follows the ground contour precisely, at a constant height. No need for conventional relief springs. The weight transferred from the implement to the front axle simultaneously increases traction and prevents drift on the hillside. For winter work with a snow plough, the constant ground pressure control provides uniform clearing results.

Rear power lift with unrivalled functionality

The rear linkage with a lift capacity of 9,450 lbs (4,286 kg) guarantees that even the heaviest mounted implements can be lifted to their full extent. Shock load stabilizing ensures quiet driving without stressful vibrations. From the cab you have an excellent view of the lower links, ball-type coupling and trailer opening. You'll love the rear of the tractor with its practical advantages: including the unrivalled one-handed lower-link latch and the spindle adjustment of the lift rods with an integrated scale. Change the spread of the lower links without tools using the bolts.



Hydraulics system with up to 27.4 gpm (104 lpm) of flow volume

A closed center load sensing variable flow pump with an impressive 27.4 gpm (104 lpm) is found on the Profi and Profi+ variants. This pump capacity keeps the engine speed low, which saves fuel effectively, even during demanding work. The Power variant has the standard tandem pump with 19.8 gpm (75 lpm) flow capacity and an open center system.

Up to four electronically controlled hydraulic valves

The Fendt 200 Vario has up to four double-acting valves in the rear or three connections in the rear and one connection in the front panel. The time function and oil quantity of all valves can be adjusted on the dashboard. You can also assign the control locations depending on the use and ergonomics; so, you might want to allocate functions to the crossgate lever or the freely assignable buttons.

Easier attachment with a valve in the front

To make it easier to attach and detach front implements with their own hydraulics—like the hydraulic folding of side guards on mowers—the Fendt 200 Vario now has connections for a double-acting valve in the front.

WHEN NEW IDEAS AND OLD VALUES COME TOGETHER.



The integrated self-levelling system of the front axle suspension ensures consistent working and driving comfort at any load. The locking function for precise implement guidance in front loader mode, for example when loading pallets.



Superior driving and working comfort

The intelligent combination of three systems guarantees maximum ride and operating comfort: the self-levelling front axle suspension with anti-roll control, the cab suspension and the active shock load stabilizing.

Front axle suspension with anti-roll control—up to 7% more area coverage, comfortable and stable.

The self-levelling front axle suspension with 3.14 in (80 mm) suspension guarantees optimum traction and increases your area coverage by up to 7%. All four wheels have permanent ground contact. The integrated anti-roll control and the ever powerful Vario CVT deliver the best working options with reduced rocking movements, even when using attachments on slopes.

Increased payload

The Fendt 200 Vario is based on a robust block design, suitable for a permissible overall weight of 16,535 lbs (7,500 kg) and a high payload of over 6,614 lbs (3,000 kg). The Fendt 200 Vario slows down via a large-sized wet ring piston brake with brake servo. This four-wheel brake with all-wheel drive combines deceleration on all four wheels and long service life with short pedal travel and forces.

Exclusive Fendt benefit

Rear PTO with external actuation and engine speed increase—practical example of filling the slurry tanker: Activate the PTO externally then increase the engine speed in the cab: now a thing of the past because the engine speed increases when you activate the PTO externally. The good news for you is you no longer have to keep getting in and out the cab.

Smart 4WD and automatic differential lock

The automatic steering and speed-dependent system for 4WD and the rear multi-disk differential lock is a huge help on the headland. Depending on the requirements, both systems are switched on or off depending on steering angle or speed. The result is ultimate tractive power and soil protection with full maneuverability.

LANE GUIDANCE AND HEADLAND MANAGEMENT.



The Fendt Guide receiver is exceptionally well protected and fully integrated into the roof design. Without overhanging parts or externally guided cables, the technology is particularly well protected against hanging branches but also theft.



Never do the same job twice, with SC

With Fendt SectionControl for ISOBUS implements, you can apply seeds, fertilisers and pesticides without overlapping. This prevents double treatment and distances are automatically maintained.

More assistance and productivity with Fendt Guide technology

Repetitive processes place huge demands on both people and machines, which in turn influence the results. With the Fendt guidance system, you can navigate the field accurately or be precision-guided along the row, always maintaining an ideal distance from the mulcher/sprayer to the crop and avoiding unwanted doubles.

Practical use 1: Recording position data when placing plants and piles

Key location data is recorded digitally. This data can then be imported into a field database for later maintenance work. With the job-related documentation system Fendt Task Doc, now you can manage your orders and documentation in a time and cost-saving manner.

Practical use 2: Documenting plant protection

Documenting your spraying and avoiding doubles is really important. With embedded documentation in the Agronomy basic package, you can seamlessly record your field work. Data is sent when you choose via USB or the mobile network.

Headland management made easy with Fendt TI

This smart assist is a real benefit for repeat processes, especially headlands. Our Fendt TI headland management system saves you up to 1,920 daily hand movements in 160 turns. Both manually at a standstill and while driving, you can record all the functions as a sequence and save them in the terminal. Later, all it takes is a touch of a button to activate the automated sequences when entering and coming out of the headland. Work without having to reposition. 5 triggers (route, time, front power lift, rear power lift and manual) and 13 function groups help you control all the key functions. Shift smoothly between the individual sequence steps.

Work profiles can be stored so your equipment is perfectly set up, even with different drivers operating the same machine

With these work profiles, you can save each implement with its own settings. This saves you from having to enter the settings each time. Even if you have different drivers, they can then work efficiently and optimized without making changes to any settings.

FENDTONE— SEAMLESSLY CONNECTING OFFICE AND MACHINE.

Consistent and intuitive operating philosophy

The FendtONE platform merges your machines and your office into one control unit. FendtONE combines the familiar operation of the tractor with the terminal for planning or control tasks that classically would take place in the office. You can schedule field data and orders on your computer or smart device wherever you are, and send them to your machine.

Choose from four modules

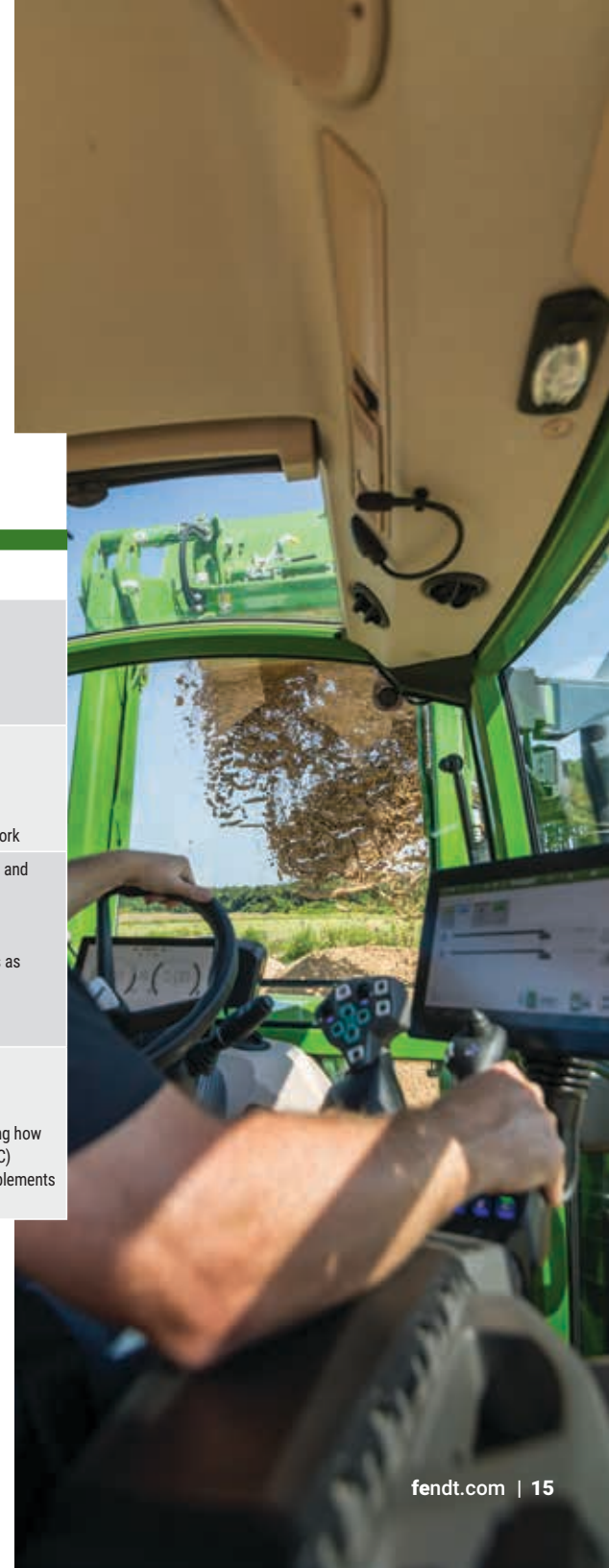
A total of four modules are available, which you can select as needed:

- Guidance system
- Machine control
- Agronomy
- Telemetry

Each module includes a basic package of the startup applications you need. You can also extend the modules with optional extras.

Tailored to your needs

Fendt Smart Farming Module	Benefits
Guidance system basic package <ul style="list-style-type: none"> • Equips the tractor for lane guidance and the Fendt Guide application 	<ul style="list-style-type: none"> • Even more efficient field work • Easy and intuitive • Field data updated and managed in one place • Less work for the driver • Higher productivity and fuel efficiency
Agronomy basic package <ul style="list-style-type: none"> • Includes the Fendt Task Doc app • Create orders and follow-up reports on the machine • Full overview of completed jobs 	<ul style="list-style-type: none"> • Overview of tasks and jobs • Simplified documentation of jobs and field work • Complete documentation of field work • Ready for future reporting • Flexible data transfer: Choice of USB or mobile network
Telemetry basic package <ul style="list-style-type: none"> • For the best analysis and optional fleet management • Use Fendt Connect to display and store data such as machine position, fuel consumption, speed and error codes • Storage to evaluate work processes and machine condition • Data sent over the mobile network 	<ul style="list-style-type: none"> • Reliable planning, with the best application windows and machine performance • Access machine data wherever you are • Simple fleet management • Avoid machine downtimes by identifying error codes as soon as they appear • Improved dealership service
Machine control basic package <ul style="list-style-type: none"> • Prerequisite for additional ISOBUS functions • Easy and intuitive control of ISOBUS attachments via ISOBUS 200 connections in the cab and socket in the rear 	<ul style="list-style-type: none"> • More efficient use of the setup and resources • Better quality of work • Helps you target your work for each sub-section • Saves on pesticides, fertilizers and seeds by targeting how you manage your work for each sub-section (VRC, SC) • Maximum range of functions to manage ISOBUS implements • Easy control of complex attachments



THE BOTTOM LINE: WE CARE ABOUT YOURS.

Fendt's Gold Star Customer Care and its three-year warranty is the best in the business. Full-service inspections. No surprise maintenance costs. Best-in-class parts availability in North America. Uptime assurance with a loaner guarantee. And, exceptional resale value when you trade in your tractor for a newer model.

The Warranty

Three years or 3,000 hours, including all scheduled routine maintenance and all other repairs, as required

The Parts

Fendt dealers use only genuine AGCO® parts, so your Fendt is always 100% Fendt. All parts are covered for one year, and all labor for six months, under the AGCO Parts Advantage warranty

The Operations Software

Starting with Model Year 2026, Fendt tractors will come with a 3-year PTx FarmENGAGE™ Operations subscription included with the Gold Star Customer Care package.

The Service

Fendt dealers and their certified technicians use only the highest-caliber diagnostic tools

The Loaner

If your tractor can't be repaired in 48 working hours* we'll provide you a loaner tractor. We stand by this promise for three years or 3,000 hours

**two 24 hour days*



Gold Star+ (Optional)
For longer working periods, you can extend the standard Gold Star offering with Gold Star+. All the same benefits but for as long as five years or 5,000 hours.

SPECIFICATIONS

Engine		209 Vario	210 Vario	211 Vario
Rated power ECE R 120	HP / kW	91 / 67	99 / 73	105 / 77
Rated power with DP ECE R 120	HP / kW			114 / 84
Rated PTO HP	HP	68	76	86
Maximum power ECE R 120	HP / kW	94 / 69	104 / 77	114 / 84
Maximum power with DP ECE R120	HP / kW			124 / 91
Number of cylinders	Number		3	
Engine displacement	L		3.3	
Rated speed	rpm		2100	
Max. torque at 1600 rpm	ft-lbs / Nm	287 / 389	316 / 428	
Max. torque with DP at 1600 rpm	ft-lbs / Nm			375 / 508
Fuel tank	gal / L		33.0 / 125	
Def tank	gal / L		4.2 / 16	

Three Point Power Lift and Hydraulics		209 Vario	210 Vario	211 Vario
Open Center Hydraulic Pump	gpm / lpm		19.8 / 75	
Closed Center Load Sense (CCLS) Hydraulic Pump	gpm / lpm		27.5 / 104	
Working pressure / control pressure	PSI / bar		2,901 / 200	
Max. rear valves	Number		4	
Max. valves optional (front/rear)	Number		1 / 3	
Max. available hydraulic oil volume	gal / L		9 / 34	
Max. lift capacity force of rear power lift	lbs / kg		9,451 / 4,287	
Max. lift capacity force of front power lift	lbs / kg		5,710 / 2,590	

Tires		209 Vario	210 Vario	211 Vario
Front tires standard			380/70R24 Mitas	
Rear tires standard			480/70R34 Mitas	

Transmission and PTO		209 Vario	210 Vario	211 Vario
Transmission type			ML75 Vario CVT	
Speed range forward	mph kph		65 ft/hr – 25 mph 0.02 – 40 kph	
Speed range reverse	mph kph		65 ft/hr – 15.5 mph 0.02 – 25 KPH	
Rear PTO	RPM		540 / 540E / 1000	
Front PTO	RPM		1000	

Dimensions		209 Vario	210 Vario	211 Vario
Front track width (standard tires)	in / mm		66.5 / 1,690	
Rear track width (standard tires)	in / mm		65.4 / 1,660	
Overall width (standard tires)	in / mm		85.4 / 2,170	
Overall length (standard tires)	in / mm		162.2 / 4,119	
Total height of drivers cab with standard tires without Fendt Guide	in / mm		103.1 / 2,620	
Total height of drivers cab with standard tires and Fendt Guide	in / mm		106.7 / 2,710	
Max. ground clearance	in / mm		18.7 / 475	
Wheelbase	in / mm		93.3 / 2,370	

Dimensions		209 Vario	210 Vario	211 Vario
Unladen weight (base tractor with cab – full tanks, without driver)	lbs / kg		9,304 / 4,220	
Max. permissible overall weight	lbs / kg		16,535 / 7,500	
Max. trailer hitch load	lbs / kg		4,409 / 2,000	

* Specifications are manufacturer's estimates at time of publication and are subject to change without prior notification.

FENDT



FENDT 200 VARIO SERIES

 **AGCO** | **AGCO ANSWERS**
Your Agriculture Company | (877) 525-4384 AGCOanswers@AGCOcorp.com

AGCO may at any time, and from time to time, for technical or other necessary reasons, modify any of the data, specifications or warranty of the products described herein. Some equipment shown may be optional. Attention: Photographs in this publication may show protective shields and guards open or removed for the purposes of illustration. Be certain all shields and guards are in place during operation.

FT25BRC008AG

© 2025 AGCO Corporation. Fendt is a worldwide brand of AGCO Corporation. AGCO®, Fendt®, Fendt Connect™, FendtONE™, Fendt iD™, TaskDoc® and VarioGrip™ are trademarks of AGCO. Bluetooth® is a trademark of Bluetooth SIG, Inc. All rights reserved.