



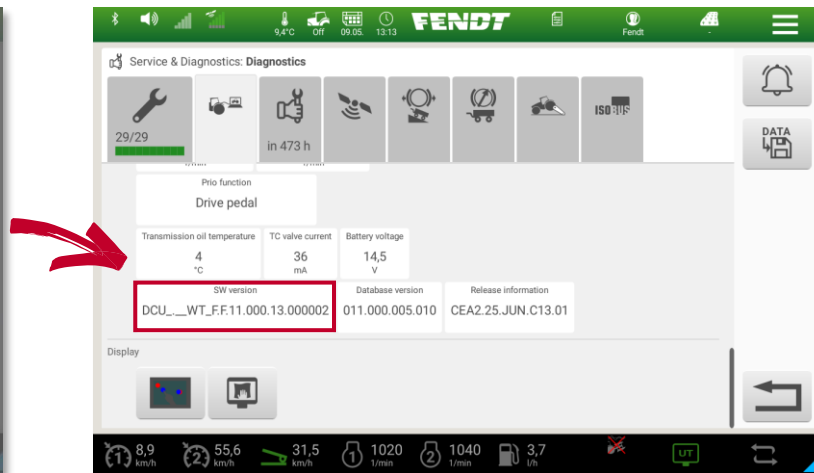
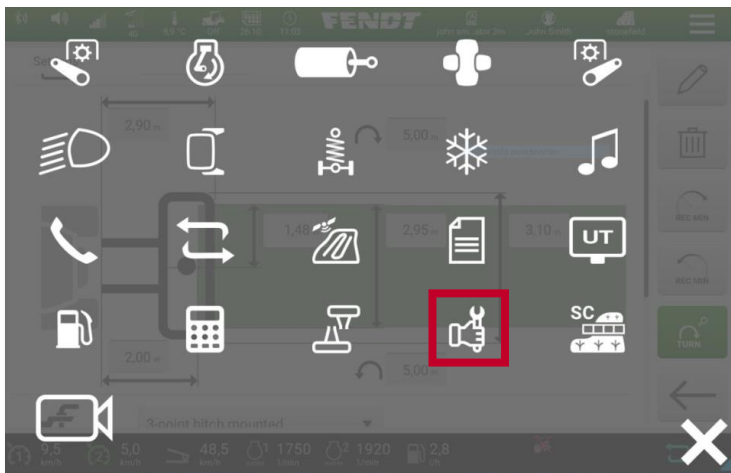
FendtONE onboard Software Version F.11

June 2025

FendtONE Software Update overview

FendtONE driver's workplace
Available from: June 2025
Software Version: F.11

How can the current software version be viewed on the FendtONE terminal?

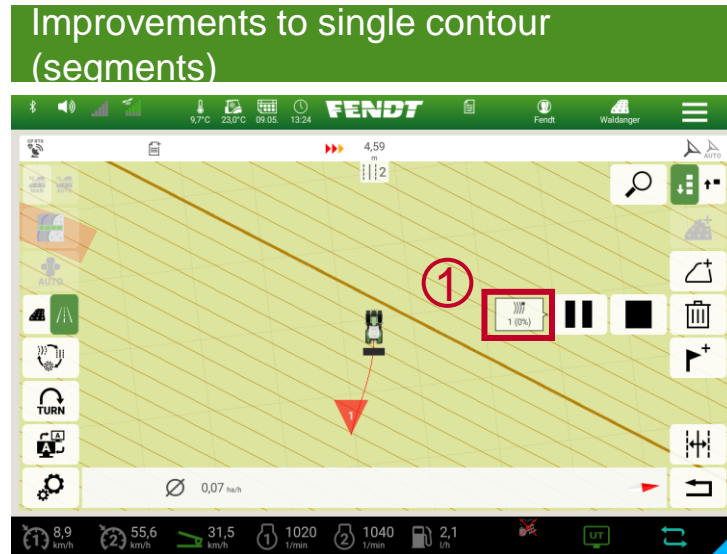


SW Version
DCU_.__WT_FF.11.000.13.000002



Fendt guidance: Improvements

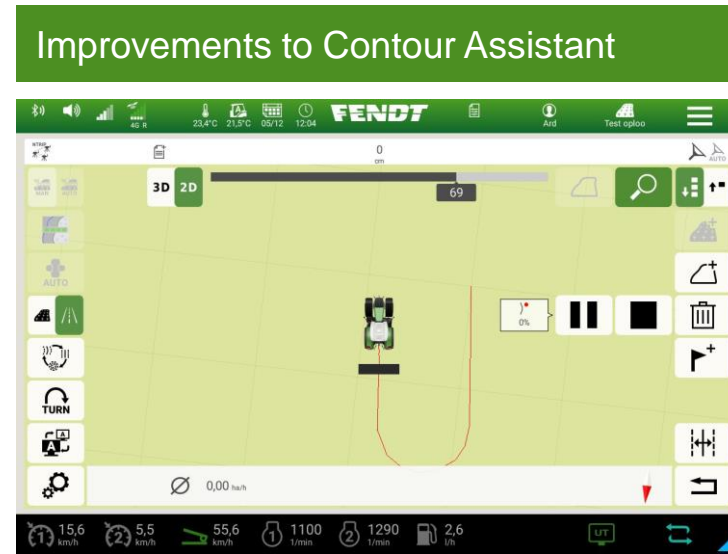
Improvements to the steering system (1)



F.11 | June 2025

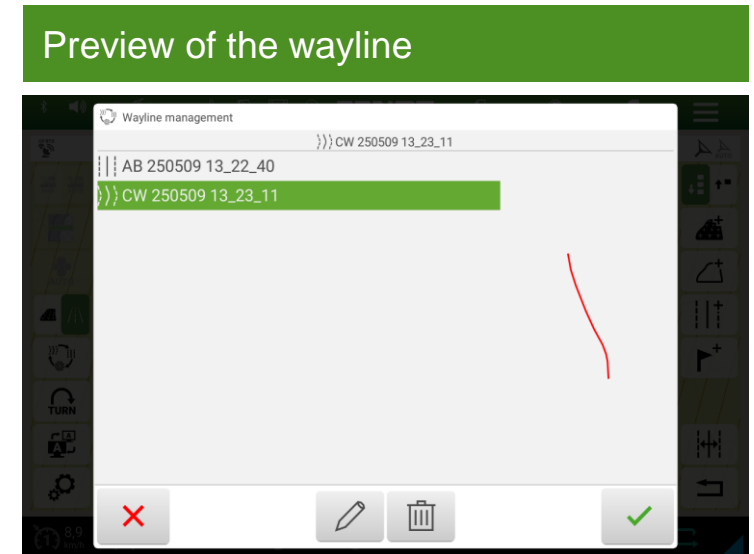
The percentage (1) of the remaining wayline points is now also displayed for single contour and single contour segments, as with contour segments.

This makes it easier for the operator to recognise when new additional single track segments or a new single track needs to be recorded.



F.11 | June 2025

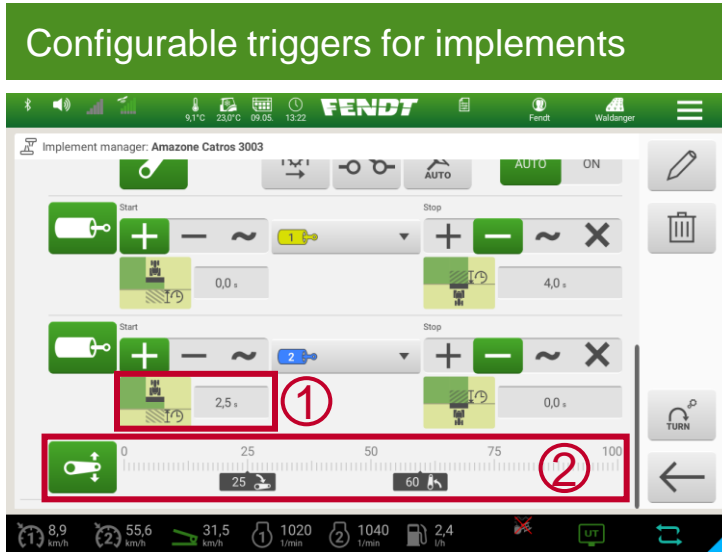
- Improved recording of a **single contour** if the vehicle is reversing during recording.
- **Contours, contour segments, single contours and single contour segments:** The generation of straight lines using the recording function has been optimised.



F.11 | June 2025

Quick visual recognition of the searched wayline, especially with a long list of available or similar-sounding names by displaying a preview of the wayline in the pop-up window.

Improvements to the steering system (2)



F.11 | June 2025

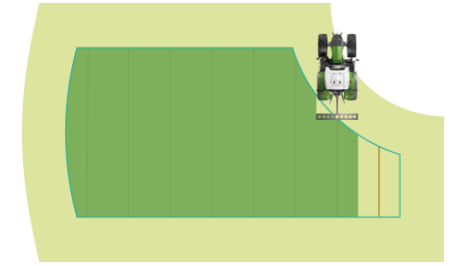
In the device manager, new functions have been added to the triggers of the **worked area** to enable more precise detection of the worked area:

- **(1) Setting the time delay for valve recording:** A work implement (e.g., semi-mounted subsoiler) is lowered by a spool valve. There is a delay between actuating the valve and lowering the implement to the desired working depth. With the latest software update, this time can be taken into account so that the recording of the worked area begins with the implement fully lowered.
- **(2) Recording start/stop setting control according to power lift position:** The recording of the processed area should take place depending on the power lift position. The controller can be used to restrict the recording start/stop of the power lift at the top/bottom.
- **The recording of the worked area of the PTO shaft starts at 100 rpm:** Recording should only start when the (PTO) implement is working.



Fendt machine control (ISOBUS): Improvements

Section control - Consider total coverage for SC



Description

Section Control is the automatic section control for ISOBUS implements.

Function extension “Consider total coverage for SC”

So far, it is not possible to differentiate whether Section Control can only access the coverage map/worked area of the current implement or any implement. The function extension allows you to differentiate between switching (1) on your own coverage and coverage from other machines. This is done in the Section Control menu (see screenshot).

Section Control coverage



OFF

ON

Use this functionality to use Section Control based on the coverage of another implement or imported coverage.

Section Control on standstill



OFF

ON

Use this functionality to make Section Control switch sections at standstill.

At a glance:

Benefit:

- **Single machine use case:** If an operation is interrupted or the implement is changed, the coverage map can be used continuously (e.g., implement breaks down, work is completed with another implement).
- **Multi Machine Use Case:** When working with several machines in a field, machines can access a coverage map (one after the other) with Section Control (e.g., mechanical weed control in combination with chemical pesticides: when hoeing sugar beet, the machine is switched off at certain points. The next step is to treat these weed patches with chemical pesticides measures. With the new software update, the same coverage map can be accessed with different machines).

Added value:

- Dependence on one machine is eliminated when using Section Control. If one machine fails, the coverage map remains valid for other machines as an option.

For more information

- Available from EOL F.11 June 2025
- Free extension of Sales Code C257 Section Control

Improvement of the machine control

Shifting the tramline control



F.11 | June 2025

Two new options have been added to the tramline control (with Section Control incl. Tramline Control):

- Set tramline rhythm for all segments to current wayline number (1).
- Reset tramline rhythm for all segments to tramline 0 (2).

This allows the tramline rhythm to be set simultaneously for all wayline segments.



FendtONE driver's workplace

FendtONE driver's workplace

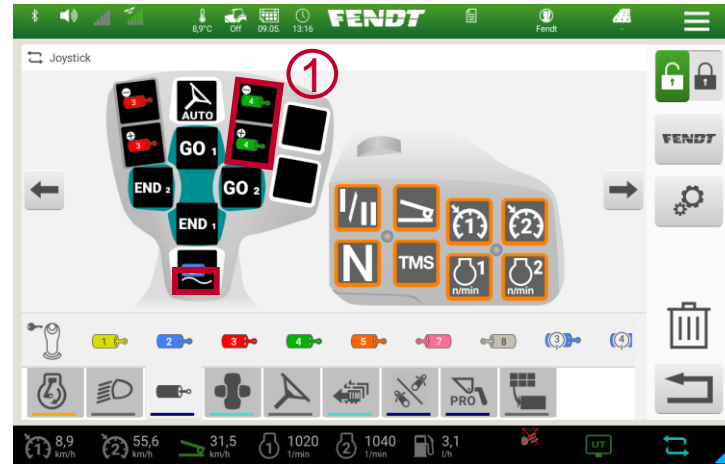
Assignable quick access tiles



F.11 | June 2025

Quick access tiles (1) were previously purely static and can be individually assigned in the same way as the terminal tiles and control lever with the new software update.

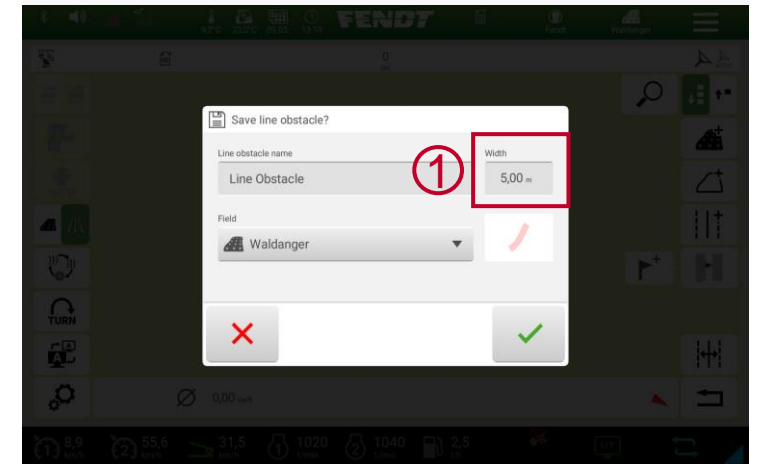
Improving the DCU



F.11 | June 2025

Change of the valve symbol (1) on the iO page to improve user-friendliness for colour-blind people.

Improving obstacles



F.11 | June 2025

With the new software update, an obstacle of uniform width can be recorded quickly and easily on one side with the width (1) specified, and no longer needs to be bypassed completely (e.g., river course, field path, road, etc.).

The handling of line obstacles has been adapted to the current ISOXML standard. This improves the exchange with field records.

FendtONE driver's workplace (2)

Overspeed protection for coasting



F.11 | June 2025

With the new software, the transmission automatically swings out further during coasting to prevent the engine speed from rising above a (series-dependent) speed. As a result, the vehicle accelerates downhill and the engine speed remains low. Only when the final speed is reached does the transmission stop swinging out and the engine speed increases as a result.

Automatic parking brake

Description

New implement mode for machines with automatic parking brake, which is activated with a delay and not immediately when leaving the driver's seat. This mode allows the driver to leave the driver's seat for a short time, e.g. to have a better view of the rear hitch while attaching an implement, without directly activating the parking brake. This mode is only active for a certain time and must be activated manually.

Activation of the new implement mode:

- Release the parking brake, e.g. by selecting a direction of travel.
- Hold the parking brake lever in position (1) until the following message appears on the dashboard: "Attach device mode of the parking brake active. Before leaving the vehicle deactivate this mode (2) or apply the parking brake manually! (3)"
- The mode is deactivated after a certain time with the following message on the dashboard: "Attach device mode of the parking brake will be deactivated soon."
- (3): Handbrake applied

At a glance

- Relevant for machines equipped with automatic parking brake (600, 700, 900, 1000).
- Improved automatic regulation of the parking brake, which adapts to the current use of the vehicle, e.g., during field or transport work.

