



FendtONE onboard Software version June 2026

June 2026



FendtONE Software Update overview



How can the current software version be viewed on the FendtONE terminal?

CEA2:
Electronics architecture of version

26:
Year 2026

Jun:
Month (June) of release

C11.01:
Sequential version identifier

FendtONE driver's workstation

Available from: June 2026



Fendt guidance:

New features and improvements

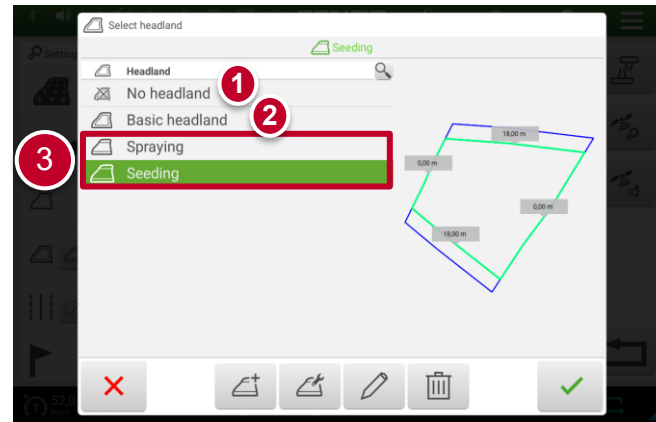
FENDT

Guidance (1)

Headland management | Multiple Advanced Headlands

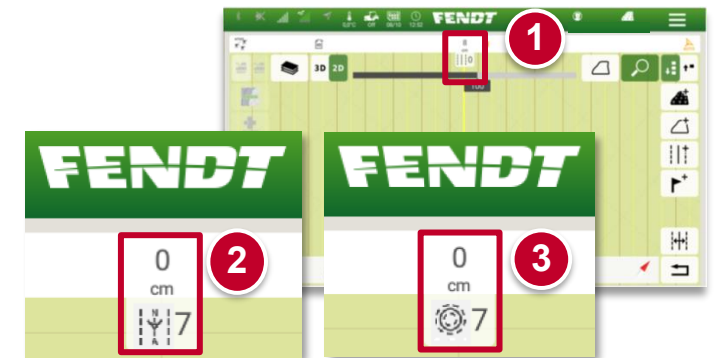
June 2026

- The "Multiple Advanced Headlands" feature allows you to save and manage multiple headland lines (3) within a field or around obstacles.
- This ensures that headland lines remain permanently available, even if other operations with different headland requirements have been carried out in the meantime.
- For each field, only one headland line can be active (green) at any one time, whilst additional headland lines are stored for use at a later date.



- Users can choose between:
 - (1) No headland
 - (2) Simple headland
 - (3) **NEW**: Multiple headland lines. Drivers have the choice:
 - Select from existing headland lines
 - **NEW**: Create new headland segments without overwriting existing ones. This means that several headland segments are available
 - **NEW**: Delete headland segments
- "Multiple Advanced Headlands" is practical
 - Where there are high demands on data consistency, reusability and standardisation
 - On farms where several machines are working in a field at the same time.

Maps guide | Type of wayline



June 2026

Currently, the AB line symbol (1) is displayed in the map header of the Guide menu for all wayline types.

When you select 'Software Update', the wayline type for the currently selected guide line style is displayed, e.g., A+ angle (2), circle (3).

Guidance (2)

Sales code extension:
C030 (Track Guidance Basic Package) and C031 (Track Guidance Basic Package NA), free software update for existing machines

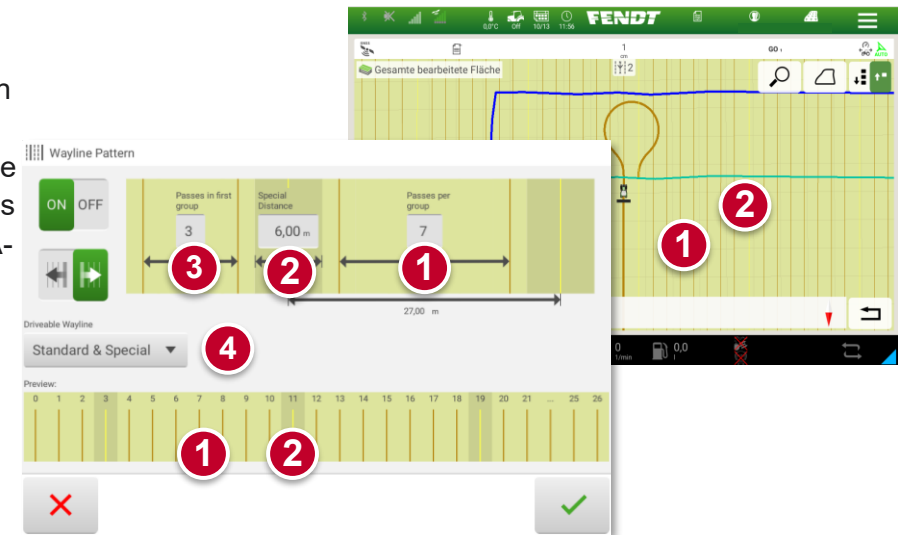
Extended track guidance basic package Wayline pattern

June 2026

The wayline pattern allows the calculation of straight waylines with irregular track-to-track spacing. In this context, an additional width (**Special Distance (2)**) can be inserted after a defined number of lanes (**Standard Distance (1)**) (e.g., traffic lane, logistics or access route). Unlike traditional wayline layout planning, where all track spacings are identical, “wayline patterns” calculates variable spacings within a continuous pattern (e.g., 7 × 3 m (geometry data for the attachment) + 1 × 6 m) upstream of A- B and A+ angle lines. Regardless of this, the number of waylines can be set between wayline 0 and the first ‘Special Distance’ (3).

Configuration is carried out directly in the FendtONE terminal (“In-field setup”), without any prior field planning. The track pattern is calculated continuously based on the track-to-track distance and the defined distances.

The driver chooses whether to take the standard, special or both tracks (4)



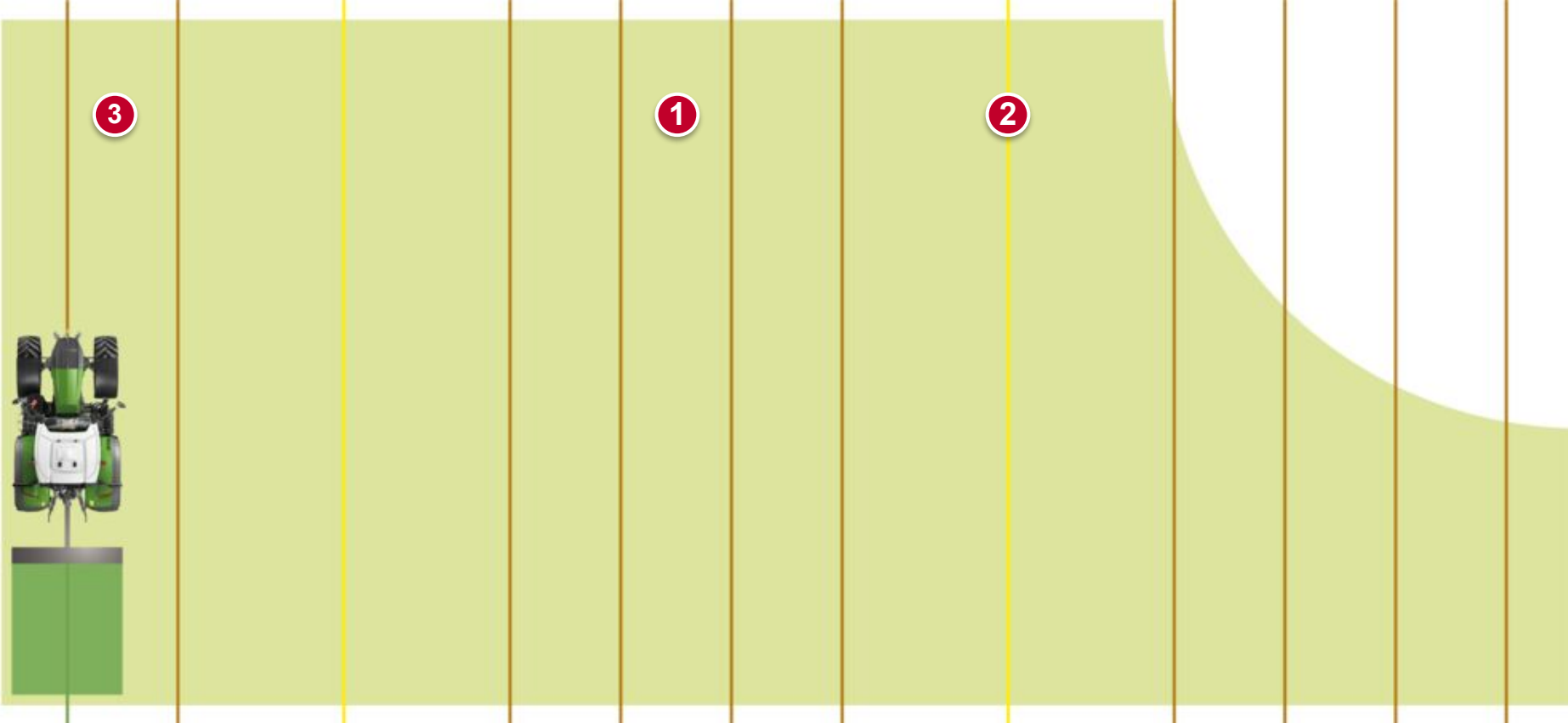
Vegetable growers, flower and ornamental plant growers, specialist crop growers and contractors, particularly in labour-intensive crops.

- Vegetable growing (logistics, harvesting and storage lanes)
- Irrigation systems (temporary installation of lines)
- Special applications with varying row spacing

Wayline patterns can be exchanged between Fendt machines. Farmers benefit from **greater flexibility in field organisation** thanks to the ability to integrate logistics and work routes directly into the guidance pattern without separate lanes or additional planning steps, thereby **improved workflows** through optimal coordination between machine work, manual labour and logistics (e.g., film, vegetable harvesting)

Guidance (3)

Extended track guidance basic package Wayline pattern





Machine Control (ISOBUS):

New features and improvements

FENDT

Machine Control (1)

Hydraulic valves - time function

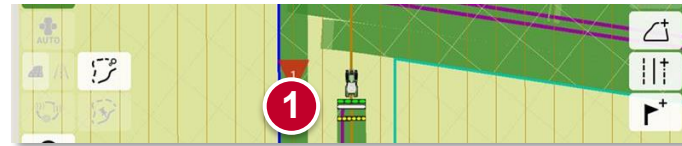


June 2026

The maximum value for the time function of a hydraulic valve has been increased from 60 seconds to 120 seconds.

From 121 seconds → Continuous operation/infinite

Tramline Control improvement (Level 1)



June 2026

Tramline Control makes it easier to calculate tramlines, regardless of the width of the seed drill or cultivation equipment. Both the implement and the tractor require the ISOBUS Tramline Control function for this. Level 1 has been available since November 2023: In Tramline Control level 1, the tractor transmits position data and track guidance information to the seed drill. Based on this, the seed drill calculates the tramlines (purple lines (1)) regardless of its position in the field and activates them automatically.

New: Display of a separate, more logical view of the Tramline Control Booms: tramline sections - when activated, these sections take precedence over other section controls.

This is particularly relevant for Pöttinger seed drills, as it allows different layers to be engaged.



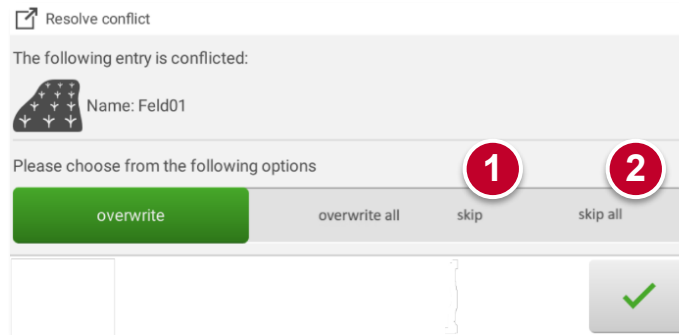
Agronomy:

Improvements

FENDT

Agronomy (1)

Improvements to data import/export

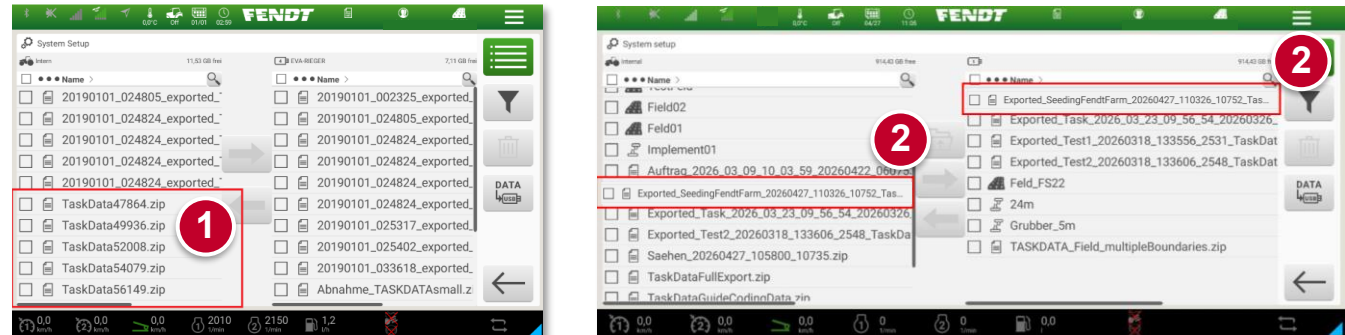


June 2026

When exporting or importing data (KML field data, implements, processed areas) to a USB stick, drivers previously had to confirm or reject each overwrite individually.

In the software update, you can simplify data import and export by using the 'Skip' (1) or 'Skip All' (2) selections.

New automatic naming of a task file



June 2026

Up to now, the automatic naming of a job file has consisted of 'TaskData' followed by a five-digit number (1). To improve traceability, task files will in future be named automatically as follows:

- Before export (left-hand side): Task name + date + time (transaction timestamp in the terminal's date format) + five-digit number sequence
 - e.g., "SeedingFendtFarm_20260427_110326_10752"
- After export (task is displayed on both sides): Exported + task name + date + time (transaction timestamp in the terminal's date format) + five-digit number sequence + "TaskData"
 - e.g., (2) "Exported_SeedingFendtFarm_20260427_110326_10752_TaskData"
- If more than 50% of the task name consists of special characters, the default name 'TaskData' is used instead of the task name (similar logic to that used for fields). In this case, 'TaskData' is omitted at the end.



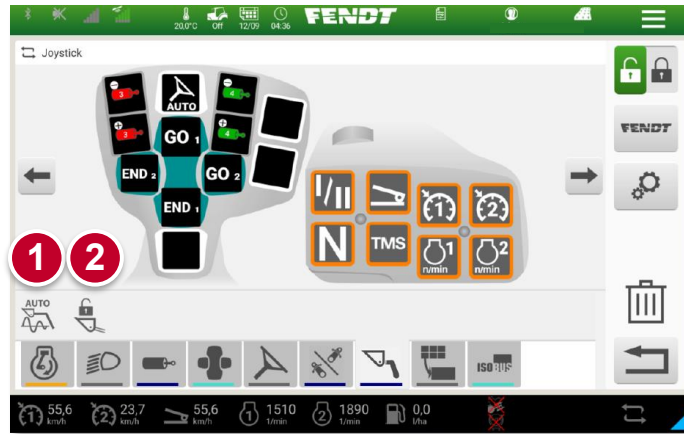
FendtONE driver's workstation:

Improvements

FENDT

Enabler (1)

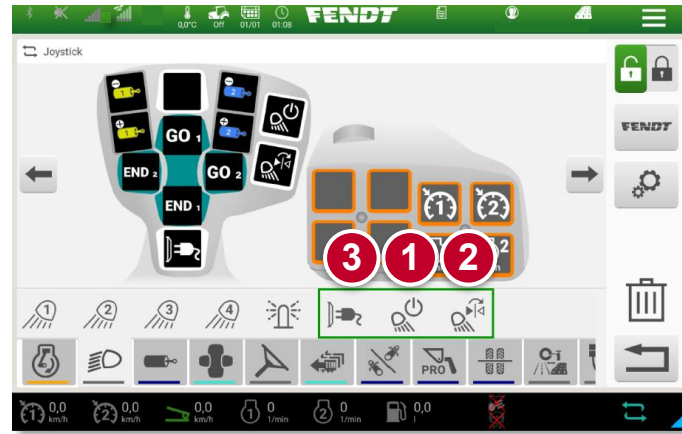
Front loader menu | Freely assignable



June 2026

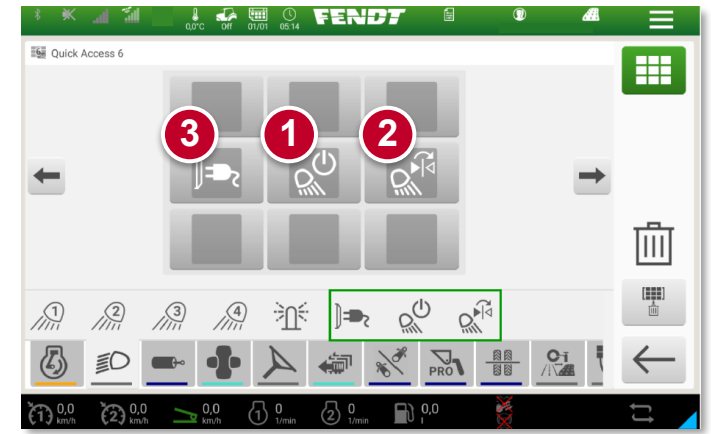
With the new software version, the functions of the 'Standard Cargo Loader' – which could previously only be configured via the terminal – can now be assigned to freely programmable buttons on the armrest, just like those of the 'Cargo Profi Loader'. These include the locking/unlocking function of the hydraulic tool release mechanism (1) and the damping mechanism (2).

Fendt 800 and 1000 Vario | Lighting concept setting | Freely assignable



June 2026

On tractors fitted with the new, optional UltraVision work lights, the "Central on/off switch" (1), "Mirror" (2) and, where fitted, "Switchable rear power socket" (3) functions can be added both on the IO page and on the customisable quick-access tiles.



Enabler (2)

Advanced features Armrest button Differential lock



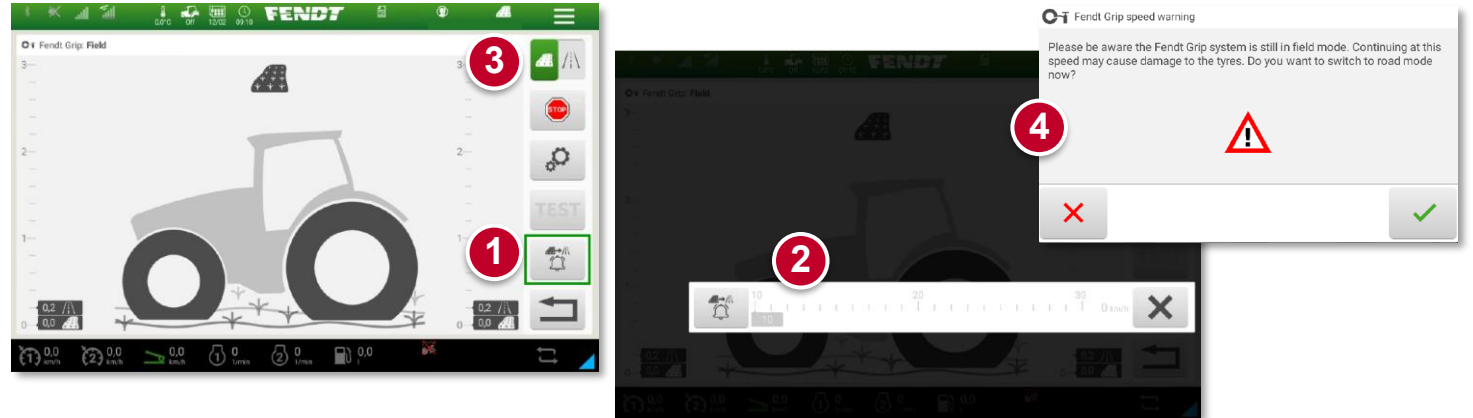
June 2026

The functionality of the differential lock button (1) on the armrest has been expanded.

If the button is pressed briefly and then released, the differential lock is permanently engaged (as before).

A new feature is that the differential lock remains active for as long as the button is pressed.

Tyre pressure regulation system | Speed alert



June 2026

This function allows drivers to set a speed alert in the tyre pressure regulation system, for example when moving from a field onto a road.

To do this, click on the new button (1), which will open a slider (2). The speed limit for the tyre pressure regulation system can be adjusted. As is familiar from the FendtONE operating logic, the alarm is active when the button (1) is highlighted in green.

If the system is in field mode (3), a pop-up window (4) appears as soon as the vehicle speed exceeds the limit. This pop-up window alerts the operator that they are still in field mode, which means that low tyre pressure combined with high vehicle speed could result in tyre damage. Clicking the green tick automatically switches the system to street mode; clicking the red X closes the pop-up window.

Enabler (3)

TMS Flex

Status expanded air dryer cartridge

June 2026

Until now, Fendt drivers have had three driving modes to choose from.

1. **TMS drive pedal:** the upper button (1) lights up, indicating comfortable pedal mode with automatic deceleration to a standstill
2. **TMS drive lever:** lower button (new symbol) (2) lights up, speed is maintained, no coasting
3. **Without TMS:** no buttons light up; standard operation using the drive lever or drive pedal



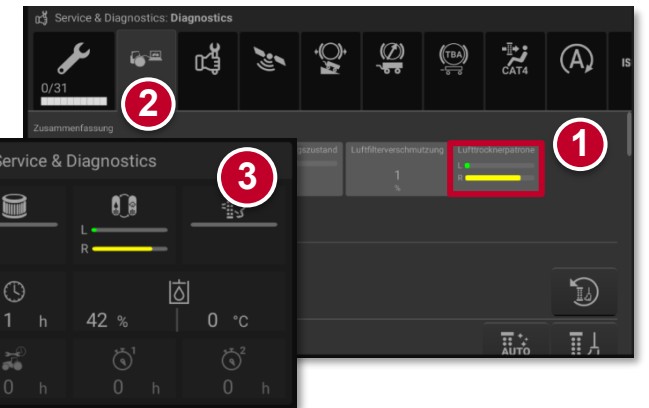
With TMS Flex, a fourth mode will be added for all tractors manufactured from 26 June 2026 onwards (exceptions: discontinued models: 500 Gen3, 300 Gen4):

4. **NEW: TMS Flex:** when both buttons (1) and (2) are activated (green light), the driver can switch spontaneously between foot and hand controls depending on the situation.

Practical application of TMS Flex, for example;

- **As a transport vehicle alongside a forage harvester** by simply maintaining a constant speed with the drive lever and making flexible, spontaneous adjustments at any time with the accelerator pedal → Greater driving comfort thanks to on-the-fly gear changes
- **When cultivating** by starting with the drive lever and switching to the drive pedal when engaging the implement, which helps prevent the “swallowing-effect”. → High sensitivity in changing operating conditions

TMS Flex is only available for new machines manufactured on or after 26 June 2026.

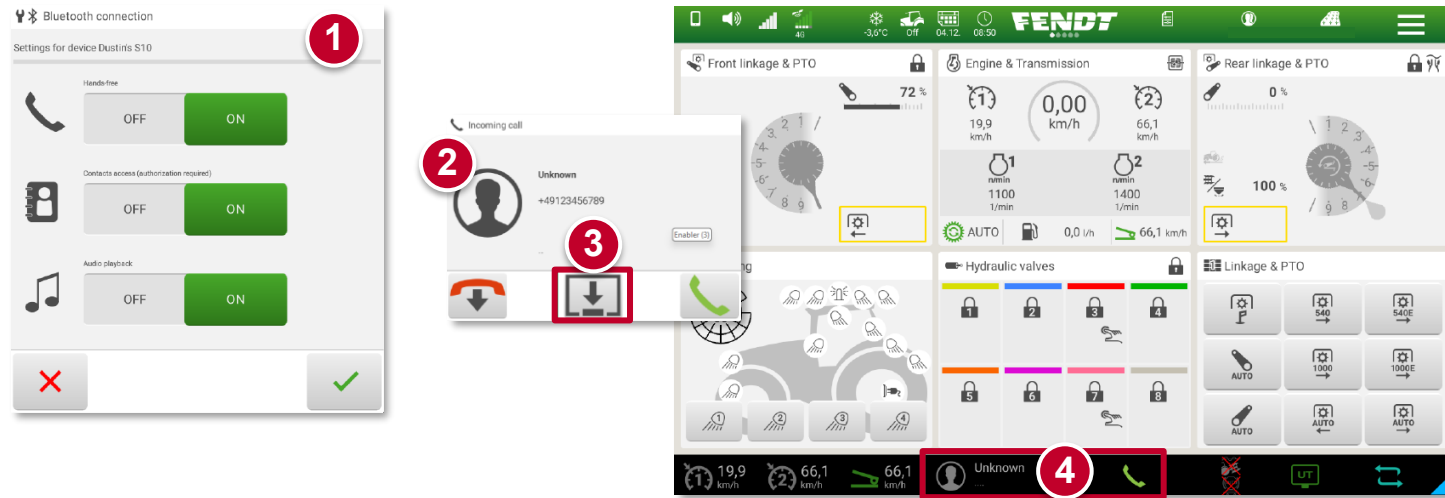


June 2026

To display the status of both air dryer cartridges (Dual-ECAD), a second bar (1) and the letters for left (L) and right (R) have been added to the 'Service & Diagnostics' tab (2) and to the 1x1 tile view (3).

Enabler (4)

Improving Bluetooth pairing with a smartphone



June 2026

Connecting smartphones to FendtONE terminals via Bluetooth is now more intuitive thanks to a software update.

When pairing a new phone, a pop-up window (1) appears, allowing you to link calls, contacts list and audio.

The pop-up window that appears when a call comes in (2) can be minimised to the status bar (4) using a new button (3) and can also be brought back up from there.

A woman with long dark hair, wearing a black sleeveless top and black athletic pants, stands in profile on the right side of the frame, looking towards a large green Fendt tractor in the center. The tractor is parked in a grassy field with trees in the background. The entire image is overlaid with a semi-transparent green filter. The Fendt logo is prominently displayed in the center of the tractor.

FENDT

For more information go to:

www.fendt.com